

GISKB LIGHT CRANE SYSTEMS





Ivan Muri, CEO As a Swiss manufacturer with fully automated production, we are loyal to the location Switzerland. The high functionality, long life and robustness of our products help our customers to avoid operational interruptions which can cause high follow-on costs. With our own development and design department, we ensure long-term innovation power. Suppliers from Switzerland and its neighbour countries guarantee the reliability and quality we demand.

Erich Widmer, Sales and Marketing Manager From project planning to installation, we support our customers with advice and assistance. As a system supplier of complete crane systems, we can respond to specific customer demands. Our customers particularly value the variety of accessories and options. Our high product quality and readiness to deliver make us a reliable and competent partner worldwide.



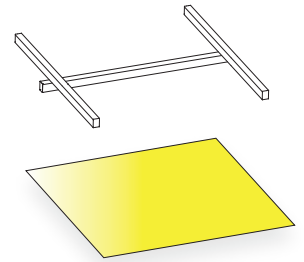
MODULAR AND FLEXIBLE



The GISKB light crane system is the perfect solution for the fast and safe overhead transport of your goods. Due to its flexible and modular design the crane system can be tailored to the needs of your workplace. Supported by hollow profiles made of steel or aluminium, materials can be moved in a linear direction or to cover an area – additionally, GISKB wall-mounted slewing jib cranes or pillar slewing jib cranes are available.

GIS-Light cranes – handy and economical

AREA-COVERING GOODS HANDLING



For area-covering goods transport up to 2000 kg GISKB hollow profiles made of steel are used. Depending on the lifting capacity, span width and transport route different profile sizes can be chosen. These can be combined with each other as crane tracks or crane bridges. Crane and cross travel is carried out manually or electrically (stepless). Trolleys with plastic rollers ensure low-noise and smooth-running moving of loads. As lifting device serves a GIS electric chain hoist.

Single bridge suspended crane Ergonomic handling

Lifting capacity up to 1600 kg

For regular construction heights

Suspension crane track rigid or pendulating

Manual or steplessly electrical crane and cross travel

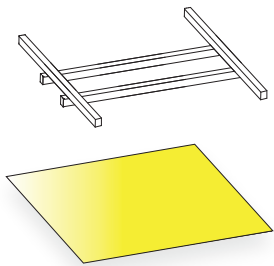
Option: for multiple crane bridges

Option: telescopic jib

YOUR BENEFITS

Due to the modular design GIS KB crane systems are easy to plan and install. All components are screwable. This allows subsequent retrofitting and extension of existing systems without problems. The pendulating or rigid suspension is adjusted to the existing ceiling construction. For power supply a trailing cable, a C-rail or a conductor line can be chosen.





Double bridge suspended crane

Heavier loads over larger distances

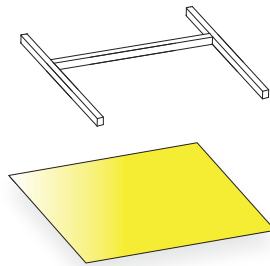
Lifting capacity up to 2000 kg

For larger span widths or transport distances

Suspension crane track rigid or pendulating

Manual or steplessly electrical crane and cross travel

Option: for multiple crane bridges



Low headroom suspended crane

Optimised construction height

Lifting capacity up to 2000 kg

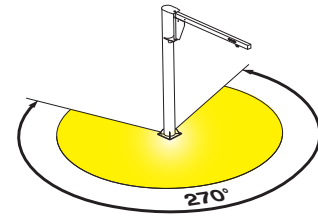
More lifting height due to lower construction height

For single or double bridge suspended crane

Crossbeam between crane track high

Manual or steplessly electrical crane and cross travel

Option: for multiple crane bridges



Slewing jib crane

Cost-efficient and simple solution

Wall-mounted slewing jib crane up to 180° of slewing range and up to 6.0 m of jib length

Pillar slewing jib crane up to 270° of slewing range and up to 6.0 m of jib length

Articulated slewing jib crane up to 330° of slewing range and up to 2.6 m of jib length

Mobile slewing jib crane with concrete base

Ceiling slewing jib crane



LINEAR GOODS HANDLING



Monorails allow an individual line for the connection of several working stations. Via track switches, bends, interlocking devices and turntables the workpiece is moved from one processing procedure to another. Trolleys with plastic rollers ensure low-noise and smooth-running moving of loads – manually or electrically (stepless).

YOUR BENEFITS

Due to the combination of bends and track switches, offset working stations can be approached very precisely in the workflow. The electric tug with frequency inverter ensures a soft start and non-swinging transport of loads. In order to increase flexibility the crane system is operated via radio remote control.





Bend

Flexible line

Optimum use of space conditions

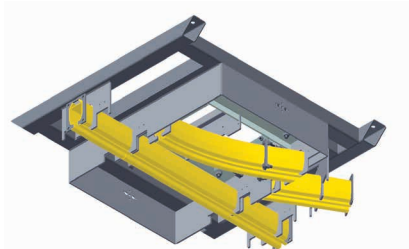
Bend with 30° or 45° angle combinable up to 60°, 75°, 90° or more

Other angles combinable through other bends

Bend radius: 1 m

Manual or electric travel

Option: conductor lines for bend



Slide switches

Connecting single lines

Connection of two or several lines with precise transition

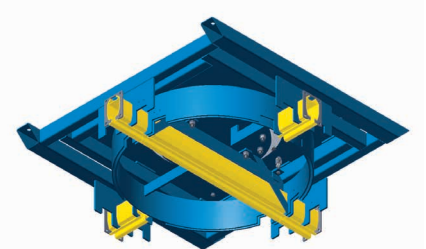
Track switch right and track switch left

With mechanical fall protection

Moving the profiles manually by means of hauling rope

Option: moving the profiles electrically

Option: conductor lines



Turntable

90° change of direction

Change of direction by 90° in confined space

Precise transition from line to line

Compact design

With mechanical fall protection

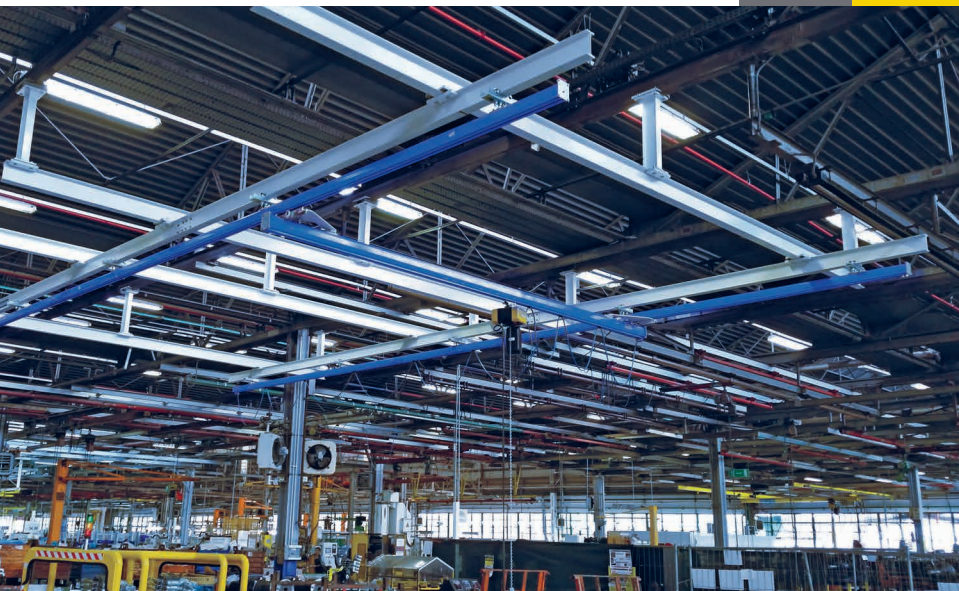
Manual turning by means of hauling rope

Option: pneumatic turning



USE

Compared to traditional structural steel beams the GISKB crane system with hollow profiles has the major advantage that the treads of the profiles are significantly better protected from dust. In this way the plastic rollers of the trolleys maintain their quiet running properties and are durable. In a long run, manual moving of the electric chain hoist and crane bridge can be carried out effortlessly and precisely. Due to their numerous advantages such as modularity, lightweight construction, flexibility, dust protection and simple installation GISKB crane systems are used in various industries.



CNH-FIAT GROUP

Production plant Modena

In Modena, Fiat produces components for tractors that are used for final assembly in a different plant. «Fiat has been using GISKB profiles for many years», says the product manager from Link Gruppo S.p.A., the Italian agency of GIS products. «The GISKB crane system is appreciated because of its ergonomic handling and the modular design. Thanks to the modular design and the simple installation subsequent adjustments are possible at any time.»



Applications

Sewage Treatment Plants
Agriculture / farming
Automotive industry
Construction industry
Chemical and Pharmaceutical

Glass processing industry
Woodworking
Plastics industry
Machine Industry
Metal / steel processing

Food industry
Public transport
Transport and Logistics
Entertainment industry
Wind / hydroelectric power



SPECIAL DESIGNS



With the GISKB – standard product range we can cover many requirements of our customers. In case of individual requirements or spatial constraints customer-specific solutions are required which is one of our strengths: We plan and implement special constructions such as telescoping cranes, low headroom cranes for optimum use of space conditions, zinc-plated versions, detached systems or shelf storage operation units. With our latest CAD systems we can offer customers clear visualisation of their individual crane systems in the planning phase.





Zinc-plated version

As a standard, GSKB hollow profiles are delivered with the primer RAL 7035. For the food industry, the chemical industry or for waste water treatment plants, where special demands are placed on corrosion resistance, profiles are hot-dip galvanised. All screws and components are as standard galvanised.

Detached system

In the case of ceilings which are either too high or have insufficient support, a detached system is recommended. Installation is carried out by fixing supports to the floor. Crane tracks and crane bridges can be easily mounted to the longitudinal beams or cross-beams of the supporting construction. Subsequent relocation of a detached system to a new site is possible without any problems.

Telescoping

To cover confined working areas GSKB crane systems can be designed as telescoping systems. This allows the user to move loads beyond the crane tracks. This is particularly used in niches or where no suspension points are possible due to ventilation pipes or other installations.



CRANE- CONSTRUCTION KIT

Four cold-rolled profile sizes can be flexibly combined with each other. Depending on the lifting capacity, suspension distance and construction height, smaller or larger profiles tailored to the customer's needs are used. The profiles are connected with screws through profile plates. Crane tracks and crane bridges can be suspended in a rigid or pendulating way, depending on the customer requirement. The modular crane-construction kit allows simple installation in a new construction or an existing structure and can be retrofitted at any time.



YOUR BENEFITS

All components for crane profiles are zinc-plated and screwable. This makes welding during installation unnecessary. Distanced suspensions allow a level compensation of the ceiling construction or underripping of an existing infrastructure. With a profile reinforcement on the crane bridge, the span width of the crane bridge can be increased.



Steel beam GISKB I + II

- Profile length max. 8m
- GISKB I: max. 800 kg lifting capacity
- GISKB II: max. 1600 kg lifting capacity
- Patented hollow profile made of steel
- Treads inside the profile protected from dirt
- Standard paint primed RAL 7035
- Cold-rolled, produced from a single piece
- Increase of the span width through profile reinforcement on profile
- Option: paint in a different colour
- Option: zinc-plated profiles

Steel beam GISKB III + IV

- Profile length max. 12 m
- GISKB III: max. 2000 kg lifting capacity
- GISKB IV: max. 2000 kg lifting capacity
- Hollow profile made of steel
- Treads inside the profile protected from dirt
- Standard paint primed RAL 7035
- Cold-rolled profile consisting of two welded half shells
- Option: paint in a different colour
- Option: zinc-plated profiles

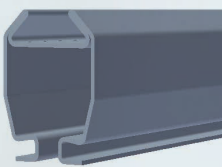
Suspensions Short

- Rigid or pendulating
- For direct suspension at existing steel girders or concrete ceilings
- Small installation dimension
- Pendulating version simpler installation, compensation of slight unevennesses in the ceiling construction
- Option: lateral suspension on wooden truss or concrete beam

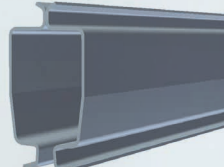
Suspensions Distanced

- Rigid or pendulating
- Simpler installation, height-compensation due to different lengths of the threaded rods or steel tubes
- Brace for crane-track suspension with more than 0.5 m distancing
- Distanced suspension of several metres possible
- Option: lateral suspension on wooden truss or concrete beam

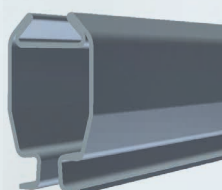
GISKB I



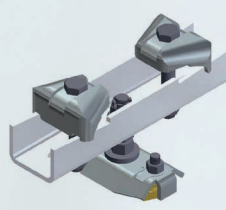
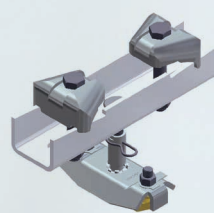
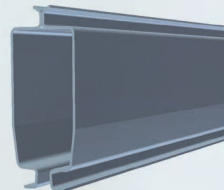
GISKB III



GISKB II



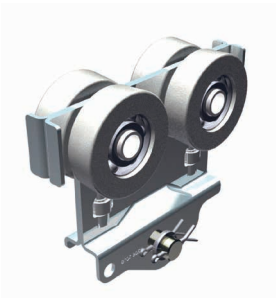
GISKB IV



TROLLEYS

GISKB trolleys and rolling apparatuses are designed in a way that they ensure perfectly smooth running on the one hand and very quiet running on the other hand. Thanks to the plastic rollers loads can be moved to their final destination manually and with little effort. In case of electrically moving of loads, the electric tug with frequency inverter ensures a gentle approach and non-swinging positioning of the transported goods.





GISKB trolleys

Curve-going

Manual trolley for GISKB hollow profiles

Steel construction, zinc-plated

Optimum ease of movement

Very quiet running due to plastic rollers

Option: 2 trolleys can be coupled

Option: 4 trolleys with saddle for double crane bridges

Option: steel rollers

Option: bumper as collision protection

Option: maintain distance between multiple bridges



Rolling apparatuses

With tilt protection

Rolling apparatuses for guiding the crane bridge

Steel construction, zinc-plated

Individual versions for single bridge suspended cranes and double bridge suspended crane

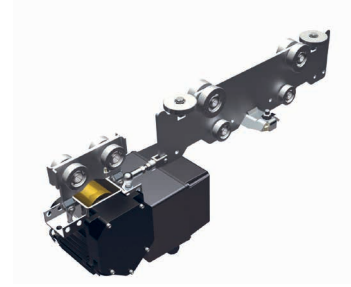
Perfect smooth running and very quiet running due to plastic rollers (GISKB I + II)

Steel rollers for higher lifting capacities (GIS III + IV)

Supporting rollers allow lateral load overhang at the crane bridge

Option: steel rollers (GISKB I + II)

Option: bumper as collision protection



Electric tug

Stepless moving

Electric tug with frequency inverter for GISKB hollow profile made of steel

Very quiet running due to plastic rollers

With soft start and soft stop

Non-swinging transport and precise positioning of loads

2 speeds and ramps adjustable 0 – 35 m/min.

Option: travel limit switch

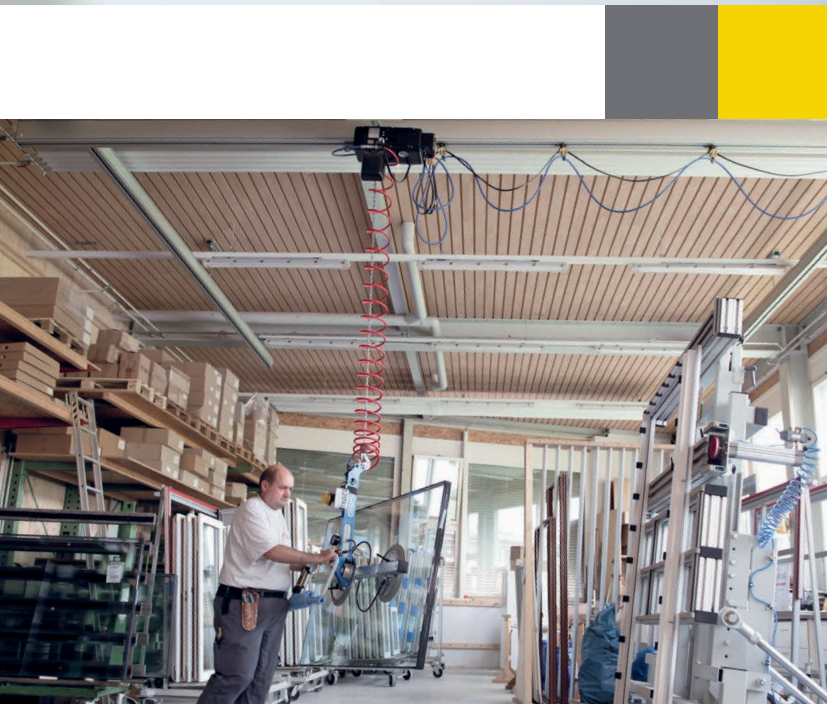
Option: equipped with radio control



GISKB ALUMINIUM



Due to a good balance between the weight of the aluminium profiles and the load capacity, manually moving loads up to 630 kg is effortless. The even load distribution on all rollers prevents jamming of the trolleys, even in case of diagonal pulling. A large working area and diverse combination possibilities ensure highest flexibility. The construction kit allows mounting the crane system to an existing steel construction, a concrete or wooden ceiling or a customised upper construction.



HAURI AG, CARPENTRY

Frank Hauri, Staffelbach, Switzerland
CEO

The GIS aluminium crane system allows quick and safe handling of glass panels. As aluminium profiles are used, the pneumatically driven vacuum equipment can be moved manually without any effort. We particularly appreciate the possibility to turn the glass panels by 90° when they are sucked in vertically, in order to get them in the correct working position. We are very satisfied with the consulting by the GIS field service as well as with the installation of the aluminium crane system. The new crane system allows significantly shorter cycle times and thus increases our productivity.



Simple installation

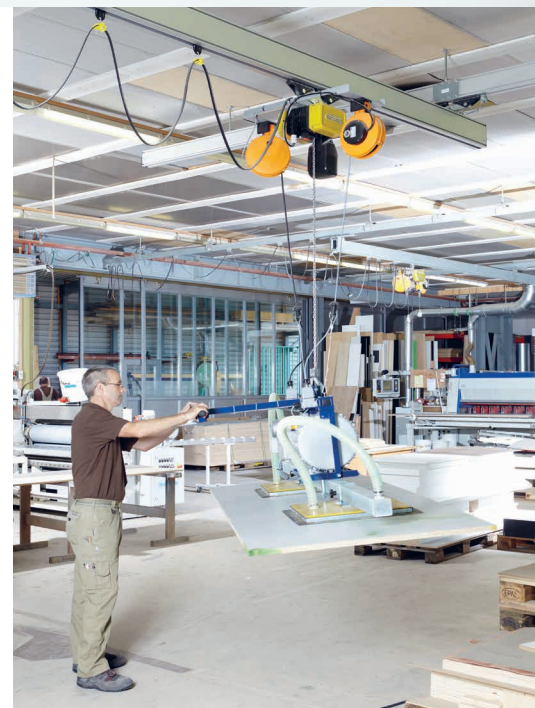
Thanks to the low weight of the aluminium profiles and the flexible connection options equipment installation is carried out quickly and easily. The modular construction-kit system allows smooth retrofitting or extension of an existing system at any time.

Perfect smooth running

Due to the excellent running properties of the low moving mass the working speed is increased while positioning is precise. This leads to significantly shorter cycle times, which has a positive effect on the production costs.

Functional design

The modular construction-kit system can be configured flexibly and can easily be integrated into every existing or new infrastructure. The natural-coloured anodised crane rails make the crane system appear sophisticated. Height differences can be compensated easily.



ENERGY SUPPLY

Trailing cable

Standard version

Cable trolley inside profile

For contaminated or humid environment

Cost-efficient solution

Suitable for outdoor use

Option: equipped with compressed-air supply



C-rail

With trailing cable

For contaminated or humid environment

Using the entire travel range

Suitable for outdoor use

Option: equipped with compressed-air supply



Conductor line

External

Space-saving (no hanging cables)

Ideal approach dimensions

Aesthetic solution

Suitable for use with multiple crane bridges

Option: IP54 (dust-protected for wood industry)

Option: available with inboard contact rail



Energy chain

Several energy supplies

For power and compressed-air supply

Space-saving (no hanging cables)

Perfectly suitable for vacuum lifters or pneumatic tools

Ideal approach dimensions

Aesthetic solution



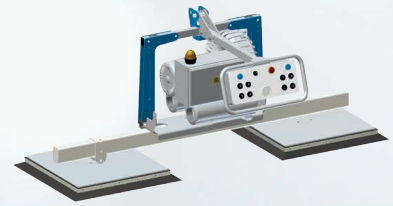
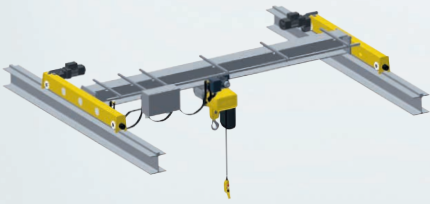
Standard versions

Lifting-capacity range steel beam 80 – 2000 kg
Lifting-capacity range aluminium beam 80 – 630 kg
4 profile sizes able to be combined flexibly
Colour steel beams light grey RAL 7035
Wide selection of components
Single bridge or double bridge suspended cranes standard or low headroom execution
Monorails with profile bends 30° and 45°
Wall-mounted slewing jib cranes, pillar slewing jib cranes, ceiling cranes, articulated slewing jib cranes or mobile slewing jib cranes
Trolleys and rolling apparatuses with quiet plastic rollers
Crane and cross travel powered manually or electrically
Electric tug frequency controlled
Travel limit switch for electrical moving
Radio remote control
Suspension rigid, direct, pendulating short or distanced
Trailing cable, C-rail or external conductor line

Special Designs

Profiles in customer-specific colours
Zinc-plated profiles
Suspended cranes with branch terminal lines
Suspended cranes with one or two-sided telescopic jib
Crane tracks with several transverse bridges
Drop stations
Console cranes
Shelf-storage operation units
Detached systems
Turntables powered manually or electrically
Monorails with shift switches powered manually or electrically
Special suspensions
Internal conductor line
Power supply via energy chain
Roving pendant





Crane systems

GISKB steel crane construction kit for line-bound or all-round goods handling. GISKB aluminium crane system, slewing pillar and wall cranes for smooth handling of transport goods. Travelling cranes and slewing cranes made of steel profiles for heavier loads.

Hoisting equipment

Over 50 years experience in the manufacture of electric chain hoists: robust, durable, reliable and highly resistant to wear. Simple maintenance. Various special versions for every application area. Wide range of accessories and options.

Vacuum handling systems

GIS vacuum handling systems for the ergonomic and gentle handling of goods made of different materials like wood, glass, stone, metal or plastic. In combination with the appropriate crane system.

GIS AG – the specialist for crane systems Founding of the GIS AG in 1957 | With own subsidiary in Germany since 1966 | Development and production of electric chain hoists in Switzerland for over 50 years | Swiss manufacturer of complete crane systems inc. hoisting equipment and vacuum lifters | Certified to ISO 9001 since 1994 | Complete market services from project planning to installation, start-up and maintenance | International sales network with over 50 qualified partners worldwide

Swiss Lifting Solutions

Certified to ISO 9001